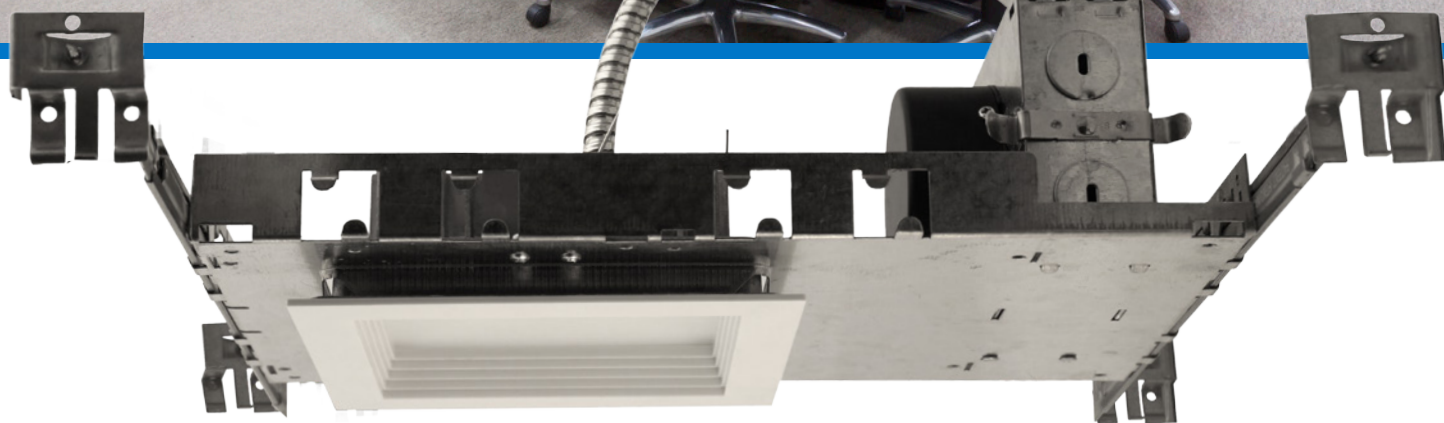
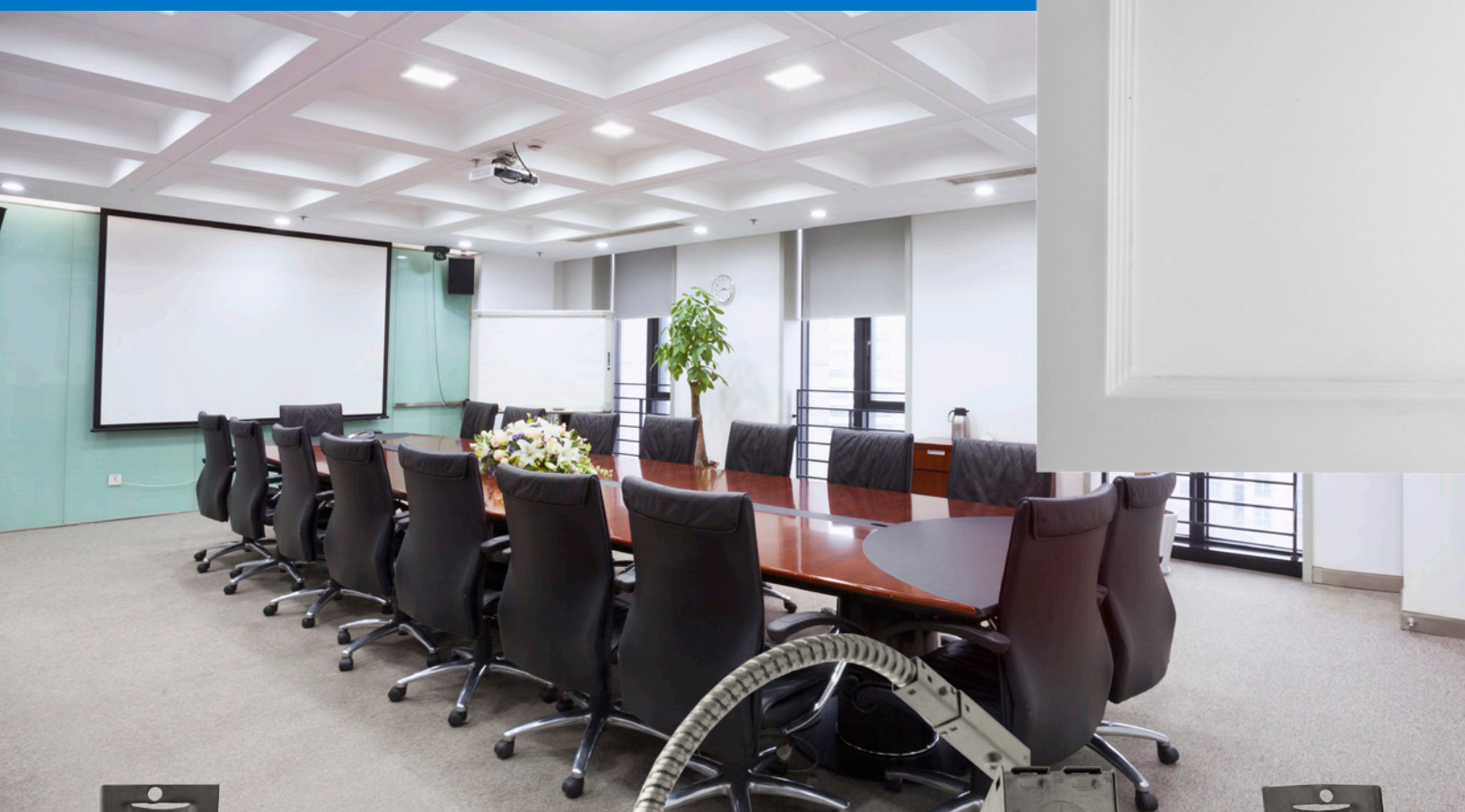


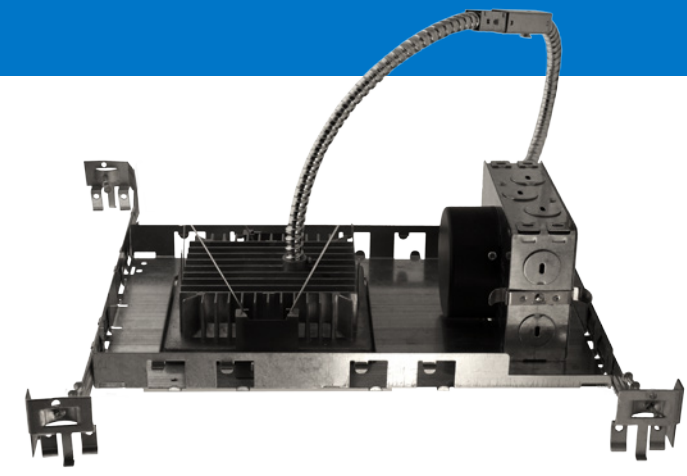
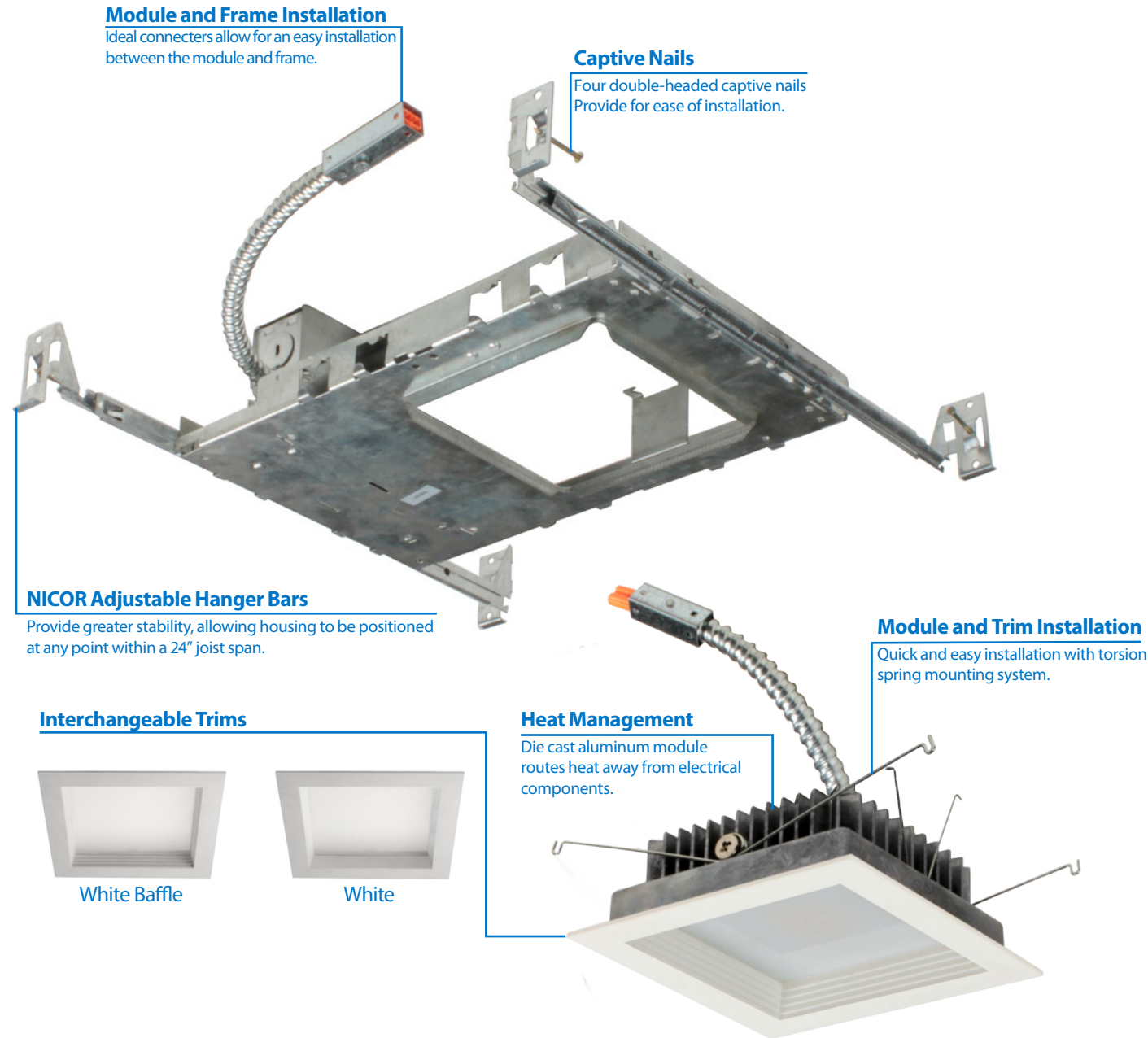
NICOR[®] | LED

5" Square LED Downlight DLQ5



Balancing high performance with contemporary design

Everything you love about the NICOR LED Downlights is now available in an aesthetically pleasing square design with interchangeable trims.



DLQ5 5" Square LED Downlight

Construction
Die cast aluminum module routes heat away from electrical components
Durable galvanized steel frame, with adjustable hanger bars to fit securely into most spaces

Optical System
Polystyrene diffuser and reflector cone create a uniform light distribution that reduces glare without sacrificing lumen output

Electrical
Utilizes high performing LEDs with greater than 90 CRI and an R9 greater than 50
Dimmable to 10% with most standard dimmers
Thermally protected, high efficiency driver standard
LEDs binned to a 3-step McAdams ellipse
Operating temperature rating of 0°F to 120°F (-18°C – 49°C)
Input voltage of 120V
TM-21 Projected L70(6K) life >46,000 hrs
LM-79, LM-80 testing performed in accordance with IESNA standards

Finish
Galvanized steel frame
Interior high reflective finish
White plastic trim (available in smooth or baffle)

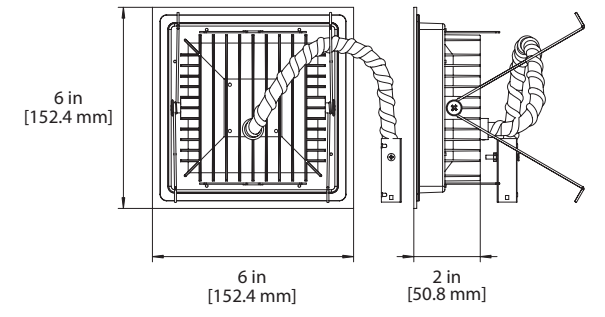
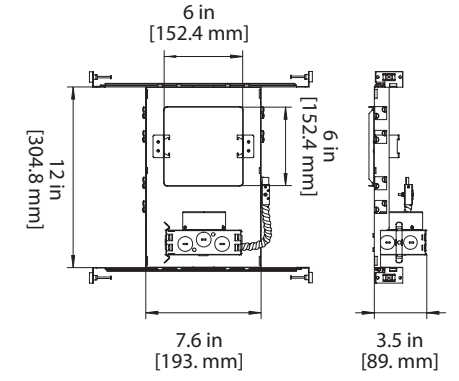
Frame Installation
NICOR captive hanger bars allows housing to be positioned at any point within a 24" joist span
Unique hanger bar lip design helps align can to joist
Four double-headed captive nails provide for ease of installation
Bars can be repositioned 90° on plaster frame without tools
Bars fit onto T-bar spine for quick alignment and can be permanently secured
Score lines allow bars to be shortened without tools to accommodate a 12" joist span

Module and Trim Installation
Quick and easy installation with torsion spring mounting system

Warranty
5-year limited system warranty standard

Product Specifications

LED Lifetime (Hrs):	46,000
Input Voltage (V):	120V
Power Draw (W):	16W



The DLQ5 Square Series is a modern architectural solution for lighting commercial, retail, and institutional spaces in the new construction market where high efficiency, low energy lighting is desired. Utilizing high efficiency LED technology and the 3-step McAdams ellipse model to balance color for natural white light and offering greater than 90 CRI, the high efficacy and exceptional color rendering make this luminaire an ideal choice for corridors, conference rooms, lobbies, and large offices. Constructed with a durable galvanized steel frame and adjustable hanger bars, the DLQ5 Series fits securely and installs easily into most any space.

Ordering Information				Includes Light Module, Frame, and Trim boxed separately	Example: DLQ5-10-120-3K-WH
Series	Version	Voltage	CCT's	Trim Color	
DLQ5	10 (1.0)	120	3K (3000)	WH (white)	
				WH-BF (White Baffle)	

Component	Part Number	Description
LIGHT MODULE	DLQ5-10-120-3K	3000K 5" Square 90CRI Module
FRAME	DLQ5-10-FRAME	5" Square Frame
TRIM	DLQ5-TRIM-WH	5" LED Square White Trim
	DLQ5-TRIM-WH-BF	5" LED Square White/Baffle Trim

Warehouse Locations

Albuquerque NM

Detroit MI

Miami FL

Syracuse NY

La Mirada CA

T 800.821.6283

F 800.892.8393

www.nicorlighting.com

2200 Midtown Place NE

Albuquerque NM 87107 USA



©2015 NICOR® • ALL RIGHTS RESERVED

NICOR® | **LED**