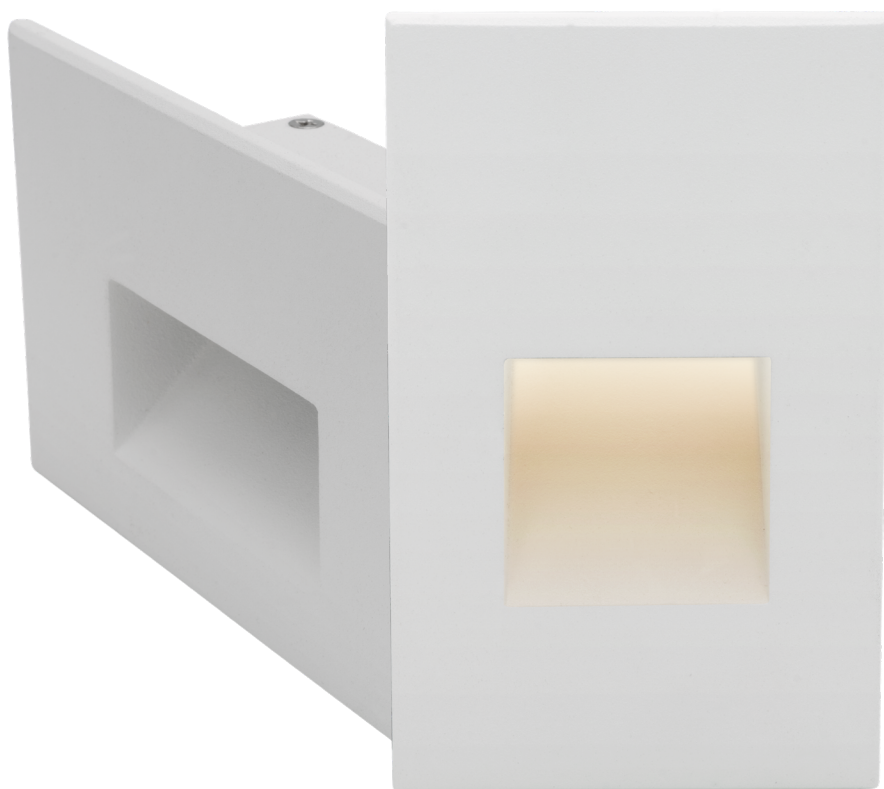


# NICOR<sup>®</sup> LED

## STW - Wet Location LED Step Light



### Vertical



White

Bronze

Black

### Horizontal



White



Bronze



Black

### 📍 Location

- Walkways
- Stairways
- Patios
- Balconies
- Porches

### ★ Product Edge

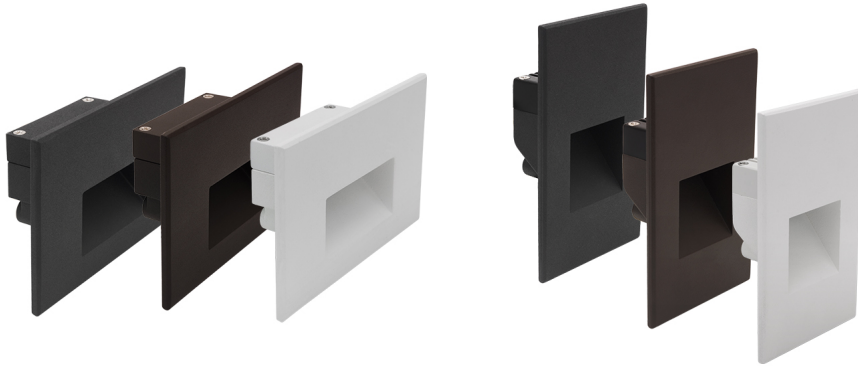
- Custom Slim Driver
- Powder Coat, Matte Finish
- Wet Location Rated
- Reduced Glare
- Aluminum Die-Cast Housing

### + Options

- Horizontal: White, Bronze, Black
- Vertical: White, Bronze, Black

# The Small Details That Make A Big Difference

NICOR's **STW** Wet Location LED Step Lights are a great compliment for your residential and commercial projects. Increases the safety of walkways, stairways, patios, and balconies. This step light not only provides safety, but it offers a warm, natural glow making it a perfect accent for any project. Created with anti-microbial powder coat paint to hinder most bacteria. Available for indoor or outdoor use.

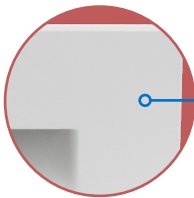


## Slim Driver

Custom slim driver for easy installation into single gang junction boxes

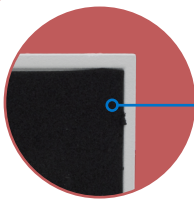
## Providing Safety

Offering a low-profile and warm glow



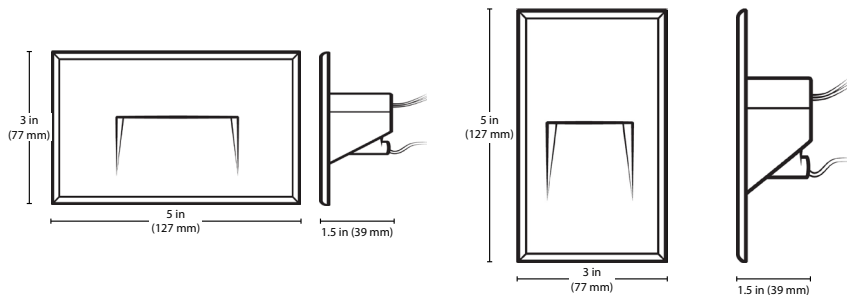
## Matte Finish

Powder coat, matte finish for a clean aesthetic look



## Wet Location Rated

Wet location approved for indoor and outdoor use with the pre-installed gasket



# Features

## Construction

- Die-cast housing routes heat away from electrical components
- Vertical model designed for use in metallic and non-metallic 2" x 4" J-Boxes
- Horizontal model designed for use in non-metallic 2" x 4" J-Boxes
- Designed to have no visible hardware, and install flush to the surface

## Optical

- Diffuser creates uniform light distribution that reduces glare while maximizing lumen output

## Electrical

- Custom slim driver minimizes installation width
- Input voltage of 120VAC, 60Hz
- Operating temperature of -4°F to 113°F (-20°C to 45°C)
- Horizontal model input power of 5.4W
- Vertical model input power of 3W

## LED

- Available in 3000K CCT
- Life rated hours >50,000
- Utilizes high performing LEDs with 80 CRI
- Vertical model luminous flux of 35 lumens
- Horizontal model luminous flux of 75 lumens

## Finish

- Powder finish coat available in white, black, or bronze
- Matte finish

## Installation

- Easy installation, mounting bracket included with fixture
- Wet location approved for indoor and outdoor use. Gasket pre-installed on fixture.
- For installations where power surge may be possible, NICOR recommends installing additional surge protection at the electrical distribution panel

## Warranty

- 5-year limited system warranty standard
- Warranty does not cover product failure due to an overvoltage event (power surge)